

GLP-1

2

.



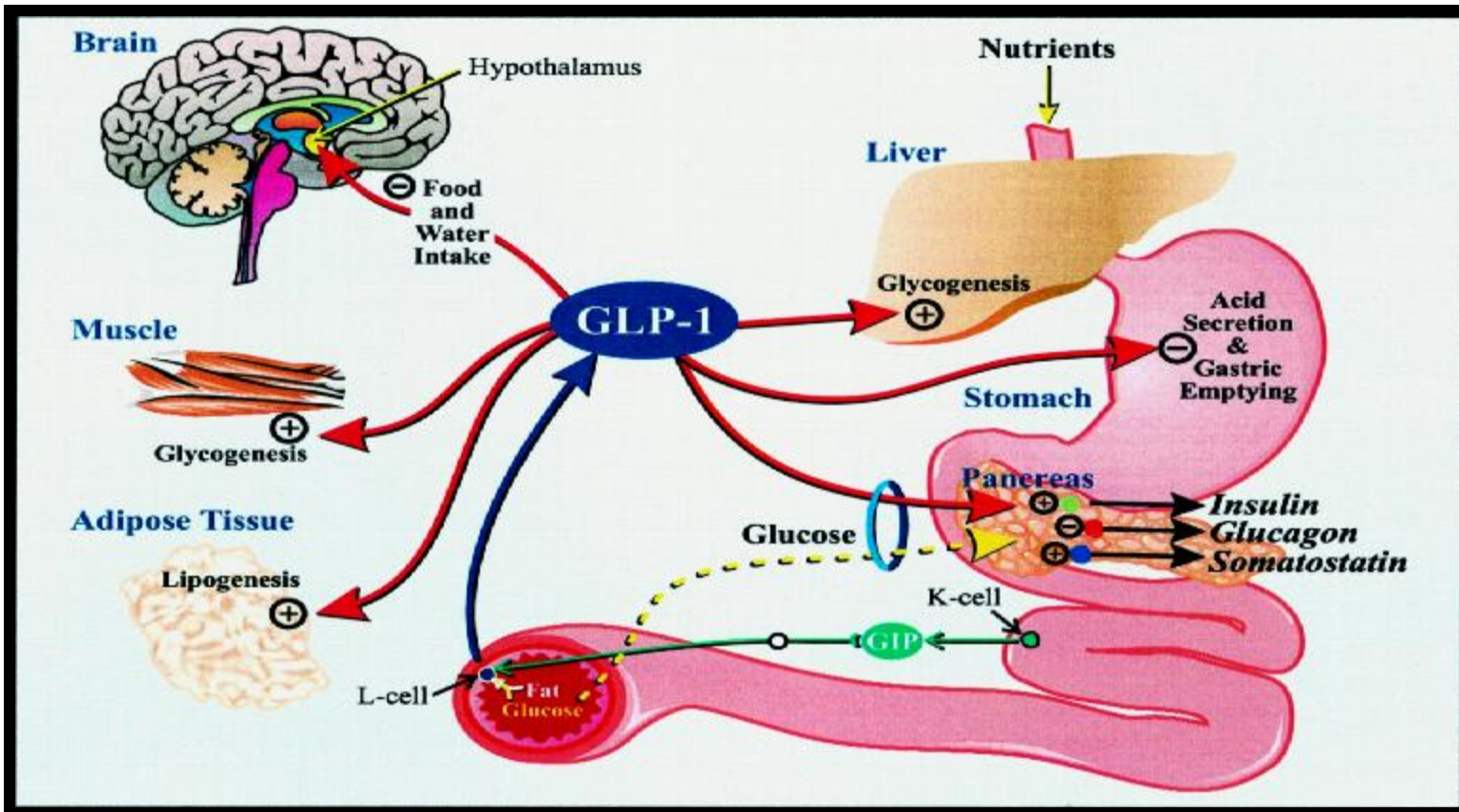
- 

- GIP – ( 30 )

- GLP-1 ( L- )

- 2

# GLP-1 ( -1)



Source: Kieffer & Habener (1999): Endocrine Reviews 20: 876-913

# GLP-1

- 1987 (Bloom .) – GLP-1

- – 1-2 ( )

-

# GLP-1 ( )

- GLP-1

- ( . . . )

- DPP-IV

GLP-1

GLP-1)

# Gila monster (Exentia-4)



# Byetta (Exenatide) –

- Exenatide

- 

- 

- 

+

- 

- 



+

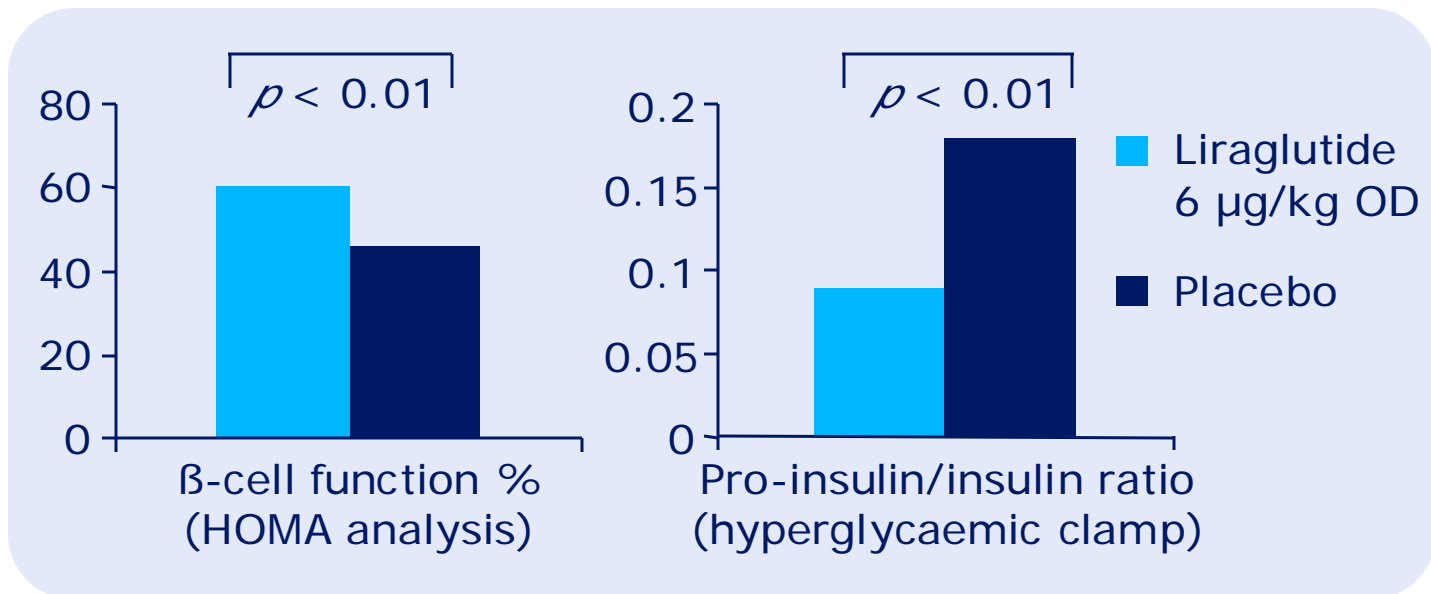


# Liraglutide (GLP-1) 2

β-

- 1 liraglutide

- i.v. glucose tolerance test
- arginine stimulation test
- hyperglycaemic clamp



GLP-1

(

/ 2

)

HbA1c

(  
- 4%  
)

## DPP-IV

(

-IV)

III

2005

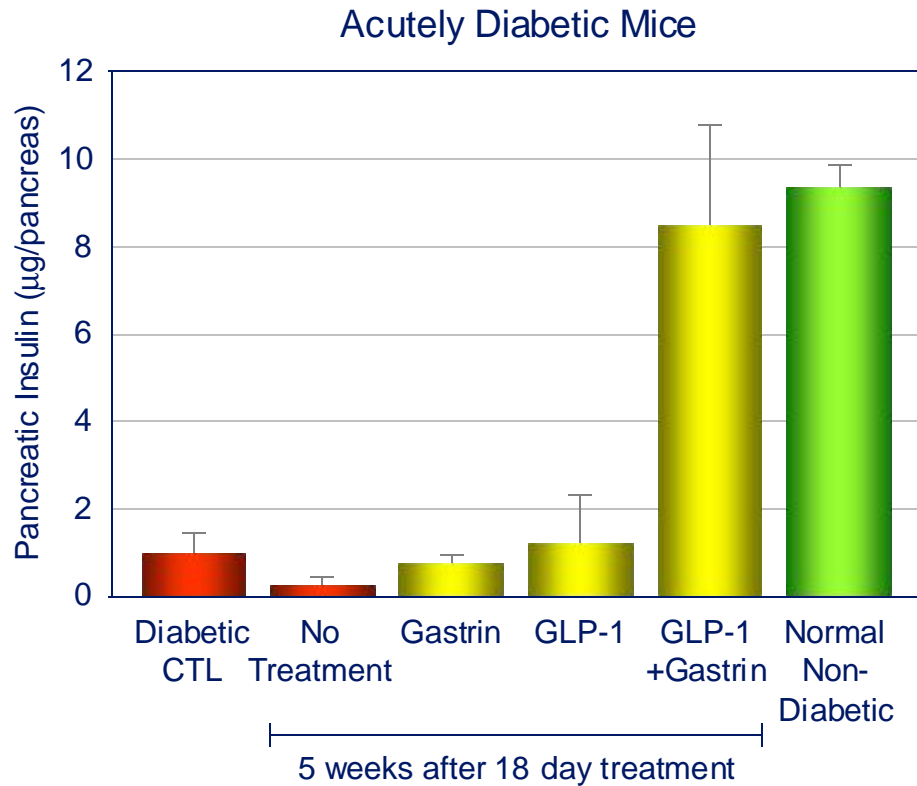
- Vildagliptin (Novartis)
- Sitagliptin (Merck)
- Saxagliptin (BMS)

2005	2010
<p><b>GLP-1</b></p> <p>(metformin, sensitizers, SU)</p>	<p><b>GLP-1</b></p> <p>(metformin, TZD, SU, meglitinides)</p> <p><b>PPAR-class ( )</b></p> <p><b>DPP-IV ( )</b></p> <p><b>GLP-1 )</b></p>

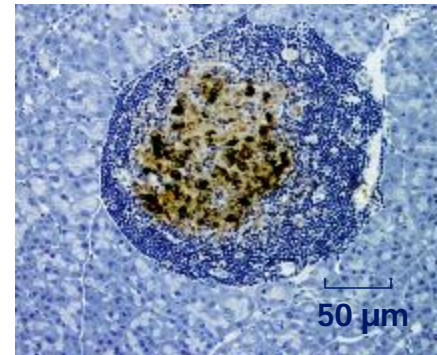
GLP-1/

( )

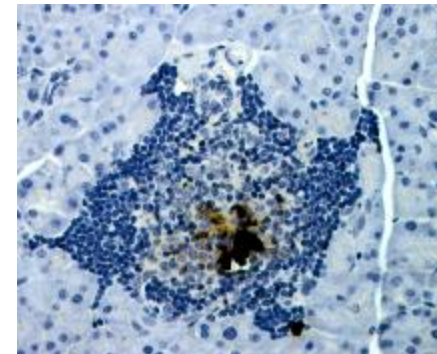
$\beta$ -



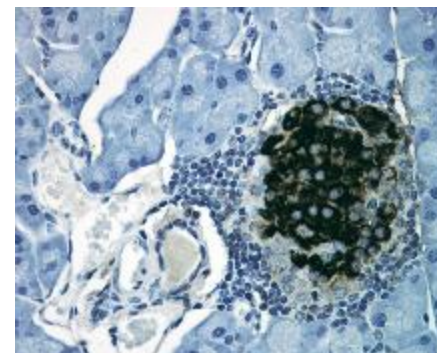
GLP-1 = 300 µg/kg/day  
Gastrin = 3 µg/kg/day



$\beta$ - 0.41 mg



b- 0.01 mg



GLP1 + Gastrin

b- 1.05 mg